



175 Derrimut Road  
PO Box 1042  
Werribee Plaza, 3030  
Phone: (03) 9749 1522  
Fax: (03) 9748 6257  
ABN:40 005 962 792

## Heathdale Report 2012

### 1. Introduction:

This report has been compiled under our obligation to the Schools Assistance Act, 2004. We welcome the opportunity to report on the College performance during 2011. This report has the following headings:

- Staff Attendance
- Staff Retention
- Teacher Qualifications
- Teacher Professional Development
- Student Attendance
- Proportions of Year 3, 5, 7 and 9 students meeting the national reading, writing, spelling and numeracy Benchmarks
- Proportion of Year 9 Students retained to Year 12
- Senior Secondary Outcomes
- Post school destinations
- Financial Activities Report
- Parent Student Teacher satisfaction.

Heathdale Christian College by virtue of its Christian heritage and foundation provides a large number of advantages that parents and the general community would find beneficial.

Heathdale is a Kindergarten to Year 12 school, that provides an affordable, safe, caring, Christian environment where students may acquire the knowledge, skills and work habits to grow into disciplined, thinking individuals.

The College has a philosophy of working with and supporting parents in their responsibility to educate their children. The College is based on the Christian religion and aims to develop the social, physical, academic and spiritual development of all children. Ultimately the College seeks to prepare students for future adult life as a contributing member of society, a well adjusted and happy individual, confident in who they are and in their standing with God, and to ultimately have a fulfilling and satisfying vocation.

The College has a large variety of VCE (Victorian Certificate of Education) units and students may also participate in a number of VET and VCAL (Victorian Certificate of Applied Learning) opportunities.

There is no minimum academic entry requirement for students. The College promotes and fosters diligence and excellence in all endeavours. Students are challenged and encouraged to achieve the highest possible standards in accordance with their God-given abilities; to equip students to pursue a satisfying vocation, and to encourage them to contribute in a positive way to society, especially within the local community.

The variety of programs encourages students to take potentially life changing experiences such as a missions trip to the Philippines, guided educational tours to China or France, and the Duke of Edinburgh challenge to mention a few. Students will be encouraged to take the Christian faith seriously and explore it as a way of enriching their lives.

Due to the demand for enrolment places, the College has needed to enlarge, expand and renew facilities. The College has a modern gymnasium that caters for the needs of all the College educational and out-of-school sporting and Physical Education requirements. There is an afterhours facility for students in Prep to Year 6 (up to 6pm). The Resource Centre has recently been expanded and refurbished, and the College has recently opened a Senior School Creative Arts Centre. These facilities demonstrate the College's commitment to a wide variety of programs. We have just constructed 16 teaching areas, a new canteen, we have recently completed an artificial turf play and PE area. In 2012 the College built an Early Childhood Learning Centre for Kindergarten and Preps in readiness for 2013.

Some of the College's past achievements have been demonstrated in the College being a past winners and finalists of the Victorian Kool Skools competition; State champions at European Handball (for 10 years running); State Champions at cycling, as well as numerous other sporting achievements. Summaries of academic results contained in this report demonstrate our desire to develop the whole child, for students to be happy, well adjusted and productive individuals.

Enrolment is open to all students of parents who are able to accept the Christian foundations, ideals and practices of the College.

## 2. Staff Attendance:

**All Staff Attendance (Teaching & Non-Teaching staff) is calculated as 99.9%.** Teacher attendance is based on actual teacher attendance as a percentage of total possible attendance.

## 3. Staff Retention:

In 2012 Heathdale employed 116 teaching staff, at 96.3 Full Time Equivalent (FTE); and 72 non-teaching staff, at 46.7 FTE.

At the end of 2012, 5 teaching staff members left to pursue other positions, 1 teaching staff member left on Maternity Leave, 1 teaching staff member retired, 5 non-teaching staff members resigned. This equates to Heathdale retaining 94% of its teaching staff into 2013, and retained 93% of its non-teaching staff into 2013.

## 4. Teacher Qualifications:

We employed 116 (96.3 FTE) teaching staff in 2012. All teaching staff were registered teachers with the Victorian Institute of Teaching (VIT). Included are 6 VIT registered Senior Staff members.

These includes staff with the following qualifications:

Qualification	Number of Recipients
Various Diplomas/Certificates	89
Graduate Bachelor Degrees	113
Post Graduate Diplomas	43
Masters Degrees	16

**5. Teacher Professional Development:**

The College is able to report that 100% of the 116 teaching staff attended at least one professional development (PD) course during 2012.

**6. Student Attendance:**

Student attendance for 2012 was 95.8%. This was calculated by finding the total number of student days attended by students as a percentage of the total number of student days possible.

**7. Proportions of Year 3, 5, 7 and 9 students meeting the National reading, writing, spelling and numeracy benchmarks:****NAPLAN TESTING REPORT 2012 - Years 3, 5, 7 & 9**

**NAPLAN:** (National Assessment Program Literacy And Numeracy)

- NAPLAN results are displayed on the Myschool website ([www.myschool.gov.au](http://www.myschool.gov.au)).
- The College is compared with the National average as well as the average of a 'like school', or schools deemed to be similar.
- Each area is graded with a number and assessment colours that indicate the school's performance, and can be summarised as:

Significantly Higher than the National Average	(Dark Green)
Higher than the National Average	(Light Green)
Average	(No Colour)
Lower than the National Average	(Pink)
Significantly Lower than the National Average.	(Red)

- We have displayed the Heathdale Christian College NAPLAN Testing results in 2 ways – in a table and as a histogram.
- 2012 is the fifth year of conducting NAPLAN testing. (2008, 2009, 2010, 2011, 2012), and all these results can be seen on the NAPLAN website ([www.myschool.gov.au](http://www.myschool.gov.au))

## Heathdale Christian College NAPLAN results as shown in Myschool for 2012:

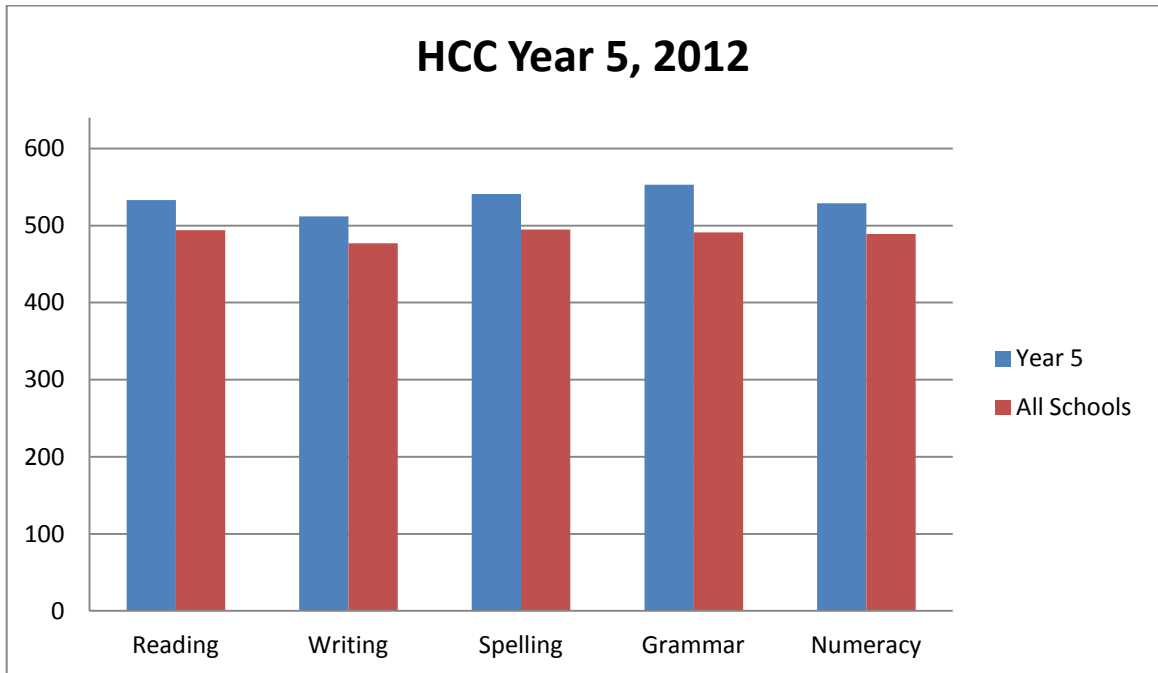
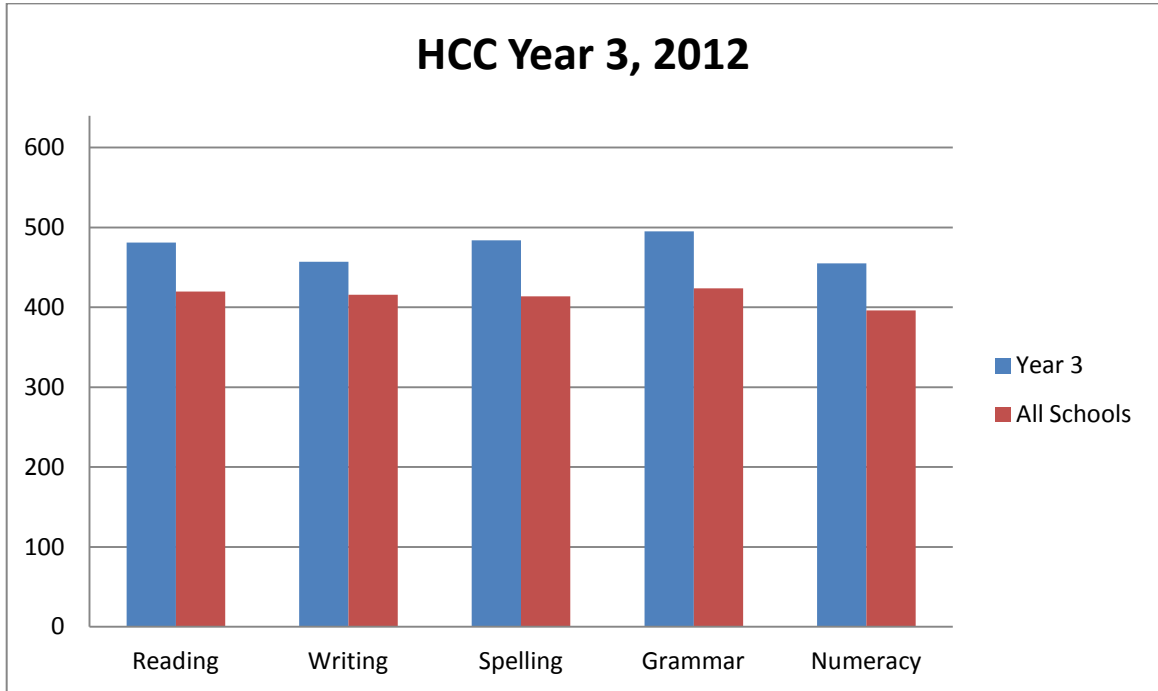
<b>2012</b>										
Schools	Similar	All	Similar	All	Similar	All	Similar	All	Similar	All

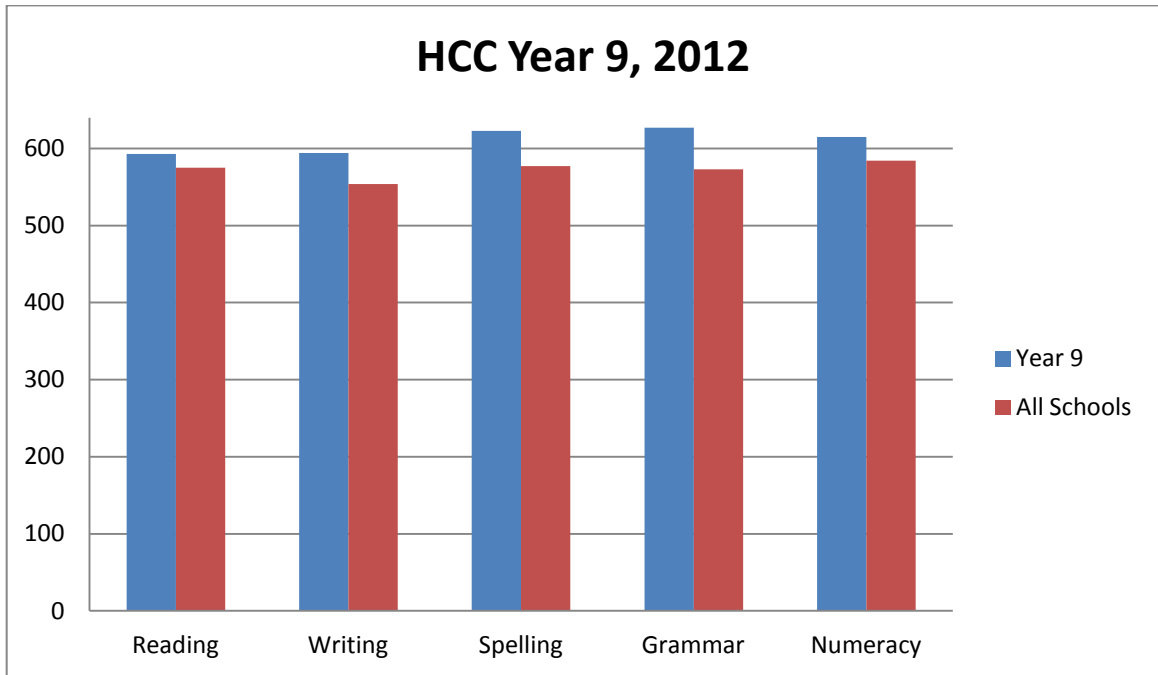
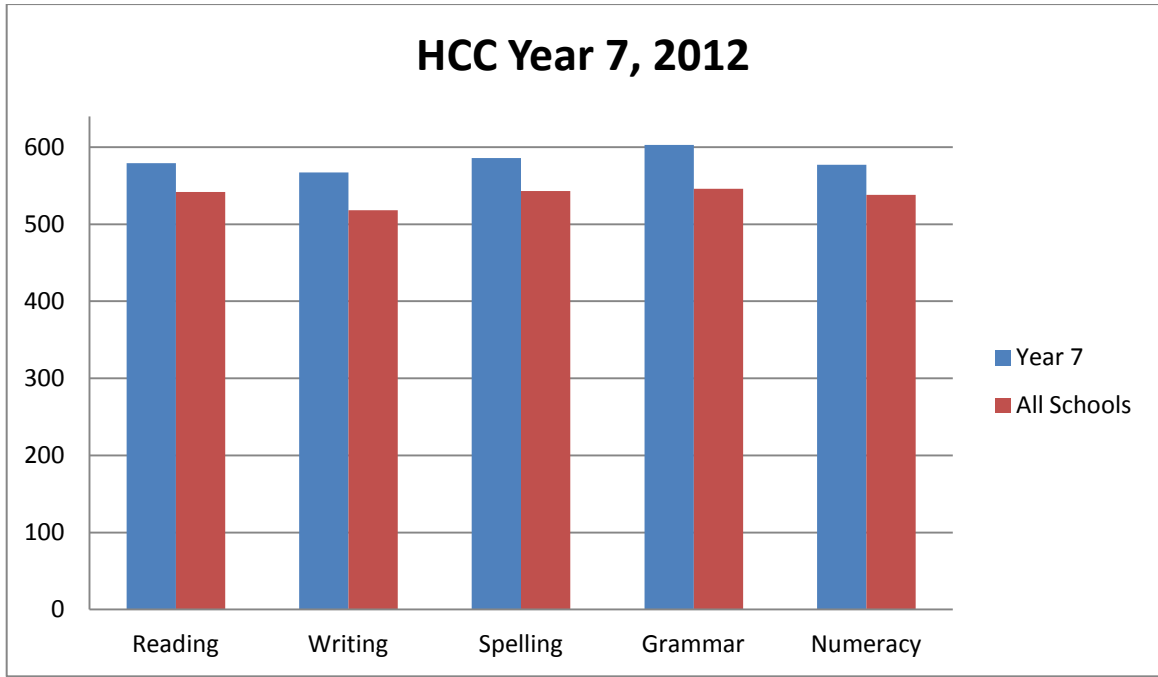
	Reading		Persuasive Writing		Spelling		Grammar & Punctuation		Numeracy	
<b>Year 3</b>	<b>481</b>		<b>457</b>		<b>484</b>		<b>495</b>		<b>455</b>	
Sim/All	442	420	428	416	428	414	445	424	414	396
% above	8.8%	14.5%	6.8%	9.9%	13.1%	16.9%	11.2%	16.7%	9.9%	14.9%

	Reading		Persuasive Writing		Spelling		Grammar & Punctuation		Numeracy	
<b>Year 5</b>	<b>533</b>		<b>512</b>		<b>541</b>		<b>553</b>		<b>529</b>	
Sim/All	512	494	489	477	505	495	511	491	505	489
% above	4.1%	7.9%	4.7%	7.3%	7.1%	9.3%	8.2%	12.6%	4.8%	8.2%

	Reading		Persuasive Writing		Spelling		Grammar & Punctuation		Numeracy	
<b>Year 7</b>	<b>579</b>		<b>567</b>		<b>586</b>		<b>603</b>		<b>577</b>	
Sim/All	558	542	534	518	554	543	565	546	556	538
% above	3.8%	6.8%	6.2%	9.5%	5.8%	7.9%	6.7%	10.4%	3.8%	7.2%

	Reading		Persuasive Writing		Spelling		Grammar & Punctuation		Numeracy	
<b>Year 9</b>	<b>593</b>		<b>594</b>		<b>623</b>		<b>627</b>		<b>615</b>	
Sim/All	597	575	578	554	594	577	596	573	606	584
% above	-0.7%	3.1%	2.8%	7.2%	4.9%	8.0%	5.2%	9.4%	1.5%	5.3%
Schools	Similar	All	Similar	All	Similar	All	Similar	All	Similar	All
	Average				(no colour)					
	Higher than average									
	Significantly higher than average									





Heathdale Christian College performed extremely well in these NAPLAN tests, performing at Significantly Higher than the National average, or Higher than the National average in Years 3, 5, 7 and 9, in all categories (Reading, Writing, Spelling, Grammar and Numeracy).

### 8. Proportion of Year 9 Students retained to Year 12:

We had 83 Year 9 students in 2009.

Of the original 83 students;

59 stayed with us till Year 12, 2012.

Of the 18 that left us in this time:

1 Exchange

7 other schools

3 moved interstate;

1 TAFE

1 Work

5 Unknown

We also gained a further 9 students from other schools in this time who completed Year 12 with us in 2012.

### 9. Senior Secondary Outcomes:

#### Year 12 Victorian Certificate of Education (VCE) Results in 2012.

Number of Students enrolled in VCE ( <i>This includes students from Years 11 &amp; 12</i> )	= 115
Number of students enrolled in VET courses	= 93
Number of Students enrolled in VCAL	= 16
% of students attaining Satisfactory VCE completion	= 100%
% of VET units completed	= 95%
% of VCAL units completed	= 100%
Number of students applying for Tertiary entry	= 65(81%)
Number of students gaining a Tertiary entry	= 63 (97%)
Median ATAR Score (State Average = 50)	= 72.9
Highest ENTER Score Attained	= 98.5
Median Study Score	= 31 (out of 50)
% of students attaining a Study Score of > 40 (out of 50)	= 12.5%
Number of VCE courses offered at Year 12	= 54
Number of VET courses offered at Year 12	= 24

### 10. Post School Destinations.

The final destinations of all students in Year 12 in 2012 can be summarised as follows:

#### VTAC Offers for 2012.

Total Number of Yr 12 Students	=	68
VCE Students	=	59
VCAL Students	=	9
No Year 12 Students sitting VCE Examinations	=	57
No. of students seeking Tertiary Places thro VTAC	=	59 (88% of stu)
Via VCE	=	56
Via VCAL	=	3
No. of students to receive at least one Offer thro VTAC	=	58 (97%)

#### 66 Offers Made to 62 Students:

	VCE	VCAL
University (VTAC)	50	
TAFE(VTAC)	7	3
Independent Colleges (VTAC)	2	
Direct Entry (not thro VTAC)		3
No Offer	1	
Totals	60	6

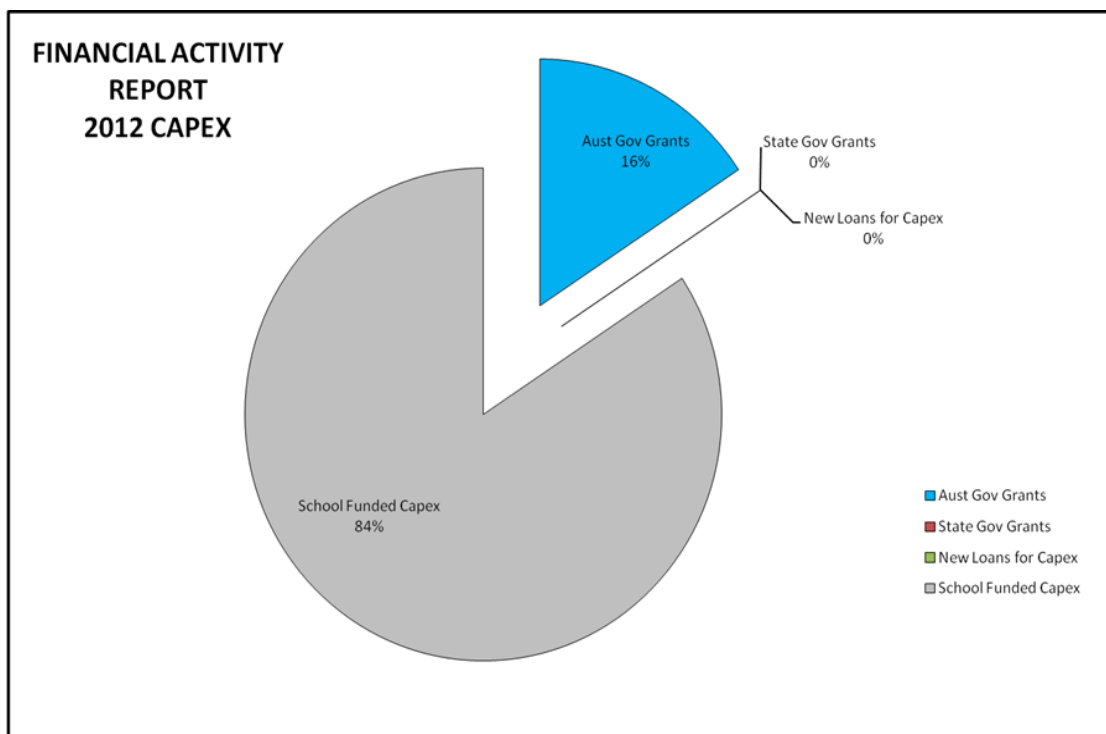
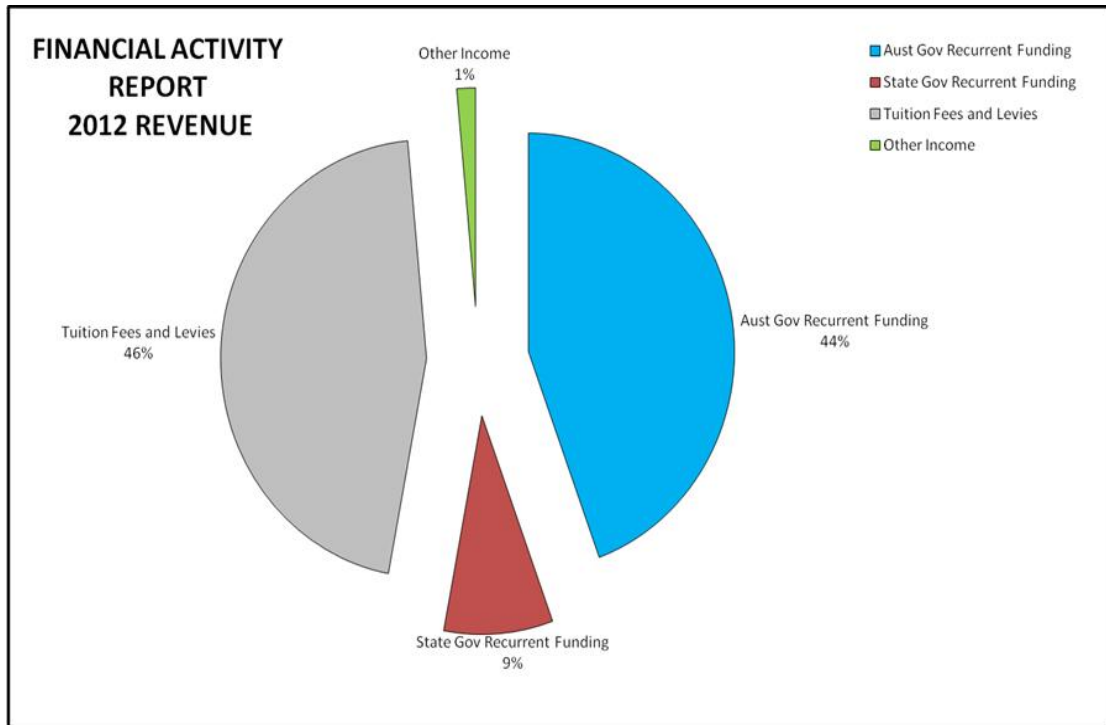
#### Summary of All Year 12 Placements:

	VCE	VCAL	% out of 70
University	46		67.6%
TAFE	7	6	19.1%
Independent Colleges	2		2.9%
Employed	2	2	5.8%
Apprenticeship		1	1.5%
Looking for work/study options	1		1.5%
Unknown	1		1.5%
Totals	59	9	100%



**11. Financial Activities Report:**

The following Pie charts demonstrate the financial activities of the College with regard to Revenue and Capital Expenditure in 2011.



**12. Parent, Student and Teacher Satisfaction:**

The following Satisfaction results were taken from a Parent Survey in June 2010. The results of this survey were posted to all parents.

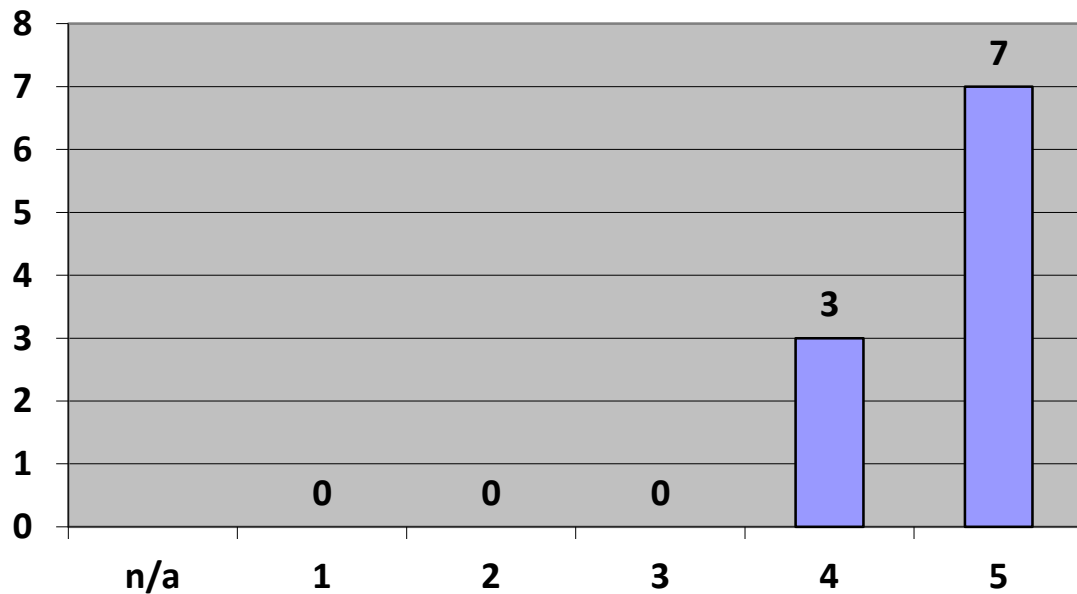
Each of the 27 questions in the survey were scored on the following 5-point scale and then displayed with a graph:

- 1 = Poor      Represents a significant problem for the College and needs urgent attention;
- 2 = Fair      Significant room for improvement; an area we need to work on;
- 3 = Average    No positive or negative feeling either way; performance is on par with other schools;
- 4 = Good      College is performing well – above average
- 5 = Excellent    An outstanding feature of the College.
- N/A = Not Applicable      does not apply in your situation

Four of the questions relating to satisfaction with the College follows:

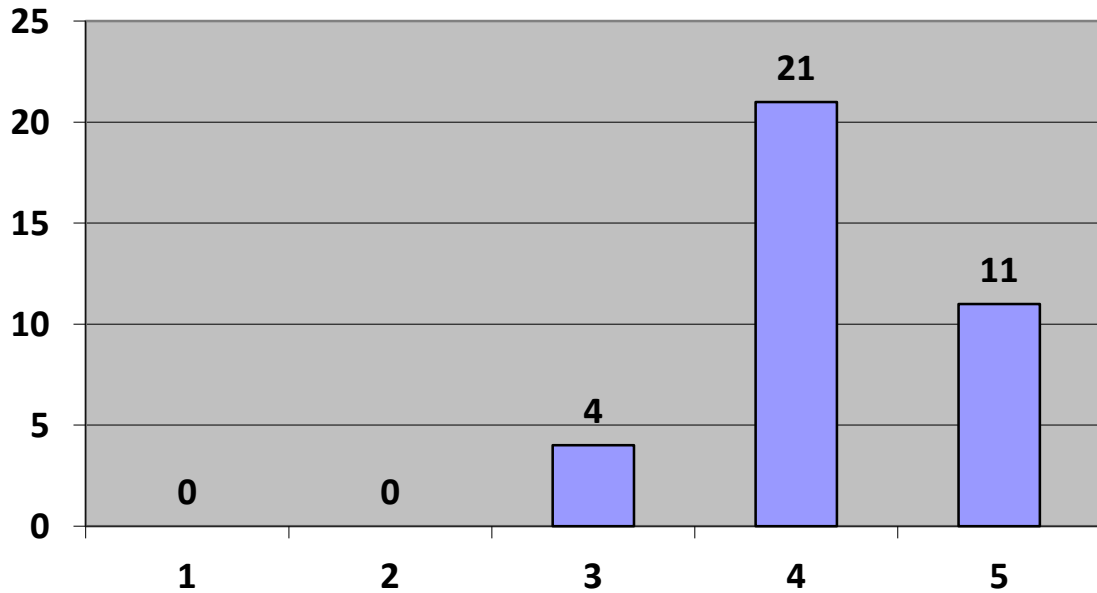
**11.1. How would you rate your overall satisfaction with:**

**11.1.1. Kindergarten**



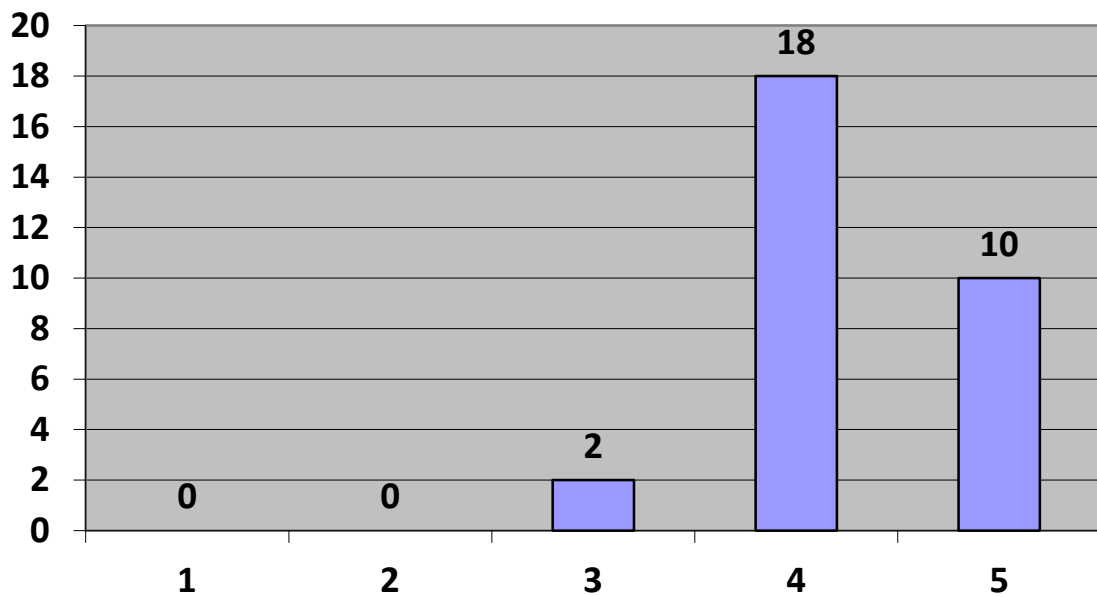
Average Response = 4.7

11.1.2 Junior School



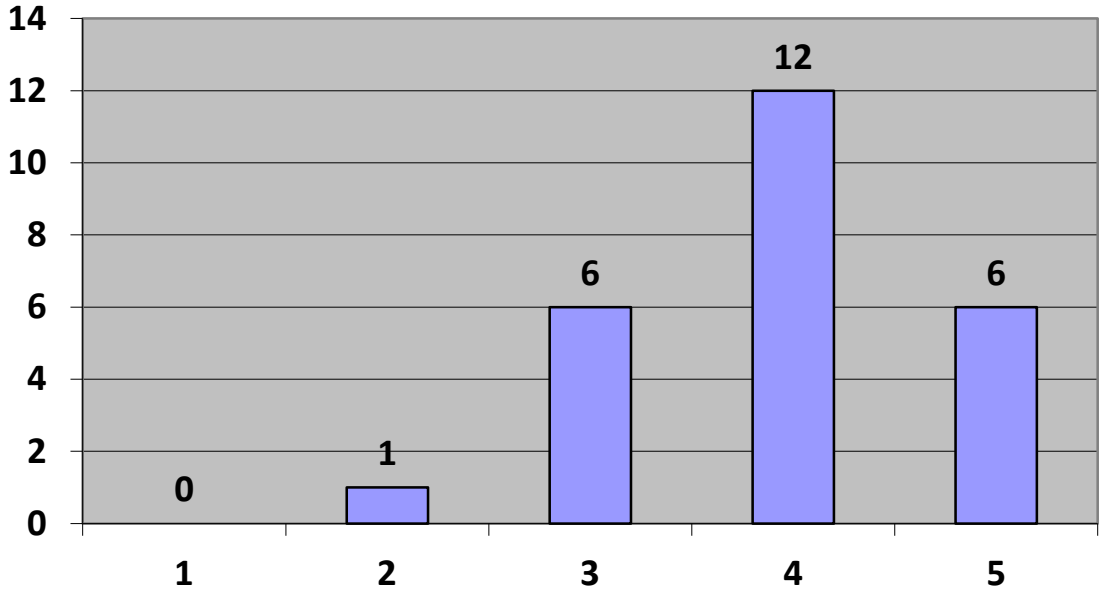
Average Response = 4.2

11.1.3 Middle School



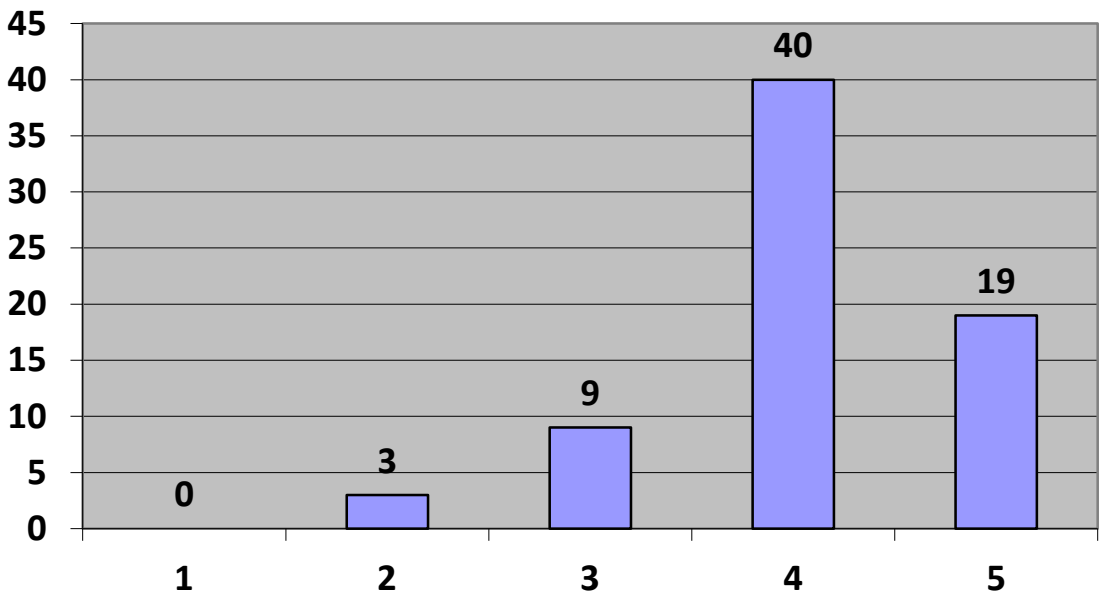
Average Response = 4.3

11.1.4 Senior School



Average Response = 3.9

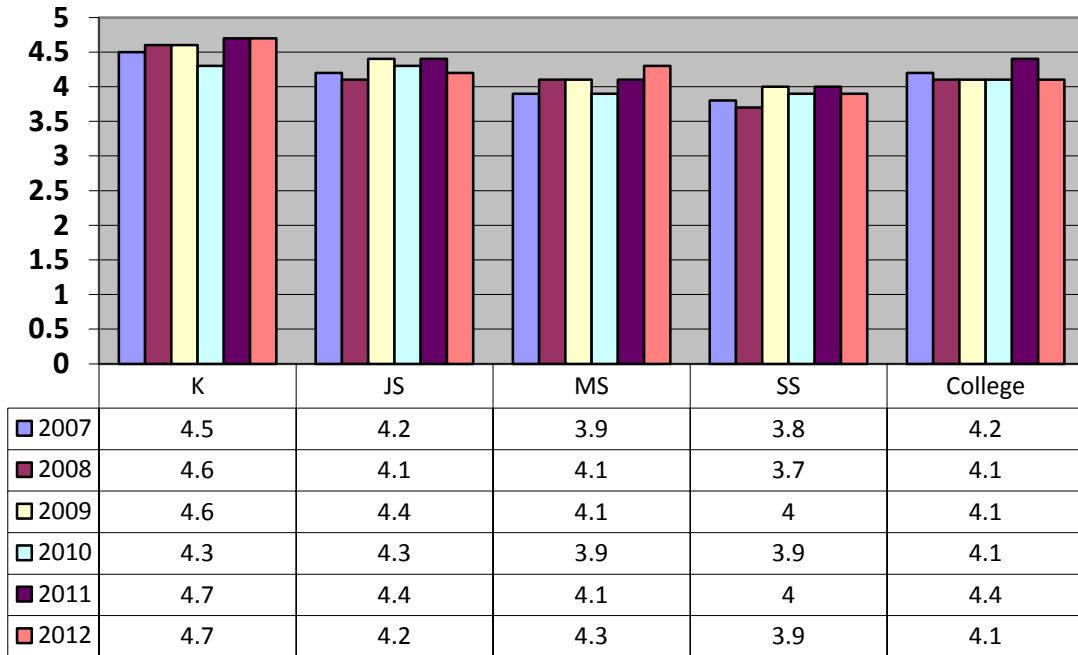
11.2. How would you as a parent rate your overall satisfaction with the College?



Average Response = 4.1

11.2. The following table shows the parent satisfaction ratings from 2006 to 2012.

### Summary of Parent Satisfaction Ratings 2006 to 2012



### 12. CONCLUSION:

If after reading this report you would like further clarification on any issue, or you would like to gain more information as regards possible enrolment in the College, please feel free to call the College on (03)9749-1522, or [enquiries@heathdale.vic.edu.au](mailto:enquiries@heathdale.vic.edu.au). We would be pleased to be of assistance to you.

Reynald Tibben  
Principal/CEO

March, 2013.